

SFWMD Program & Project Update

Joint Working Group and Science
Coordination Group Meeting
September 1, 2022

Mindy Parrott
Principal Federal Policy Analyst
Restoration Planning Bureau
Ecosystem Restoration & Capital Projects

SFWMD SFER & Restoration Strategies Projects

Planning

- Lake Okeechobee Watershed Restoration Project (LOWRP)
- Western Everglades Restoration Project (WERP)
- Biscayne Bay & Southeastern Everglades Ecosystem Restoration (BBSEER)

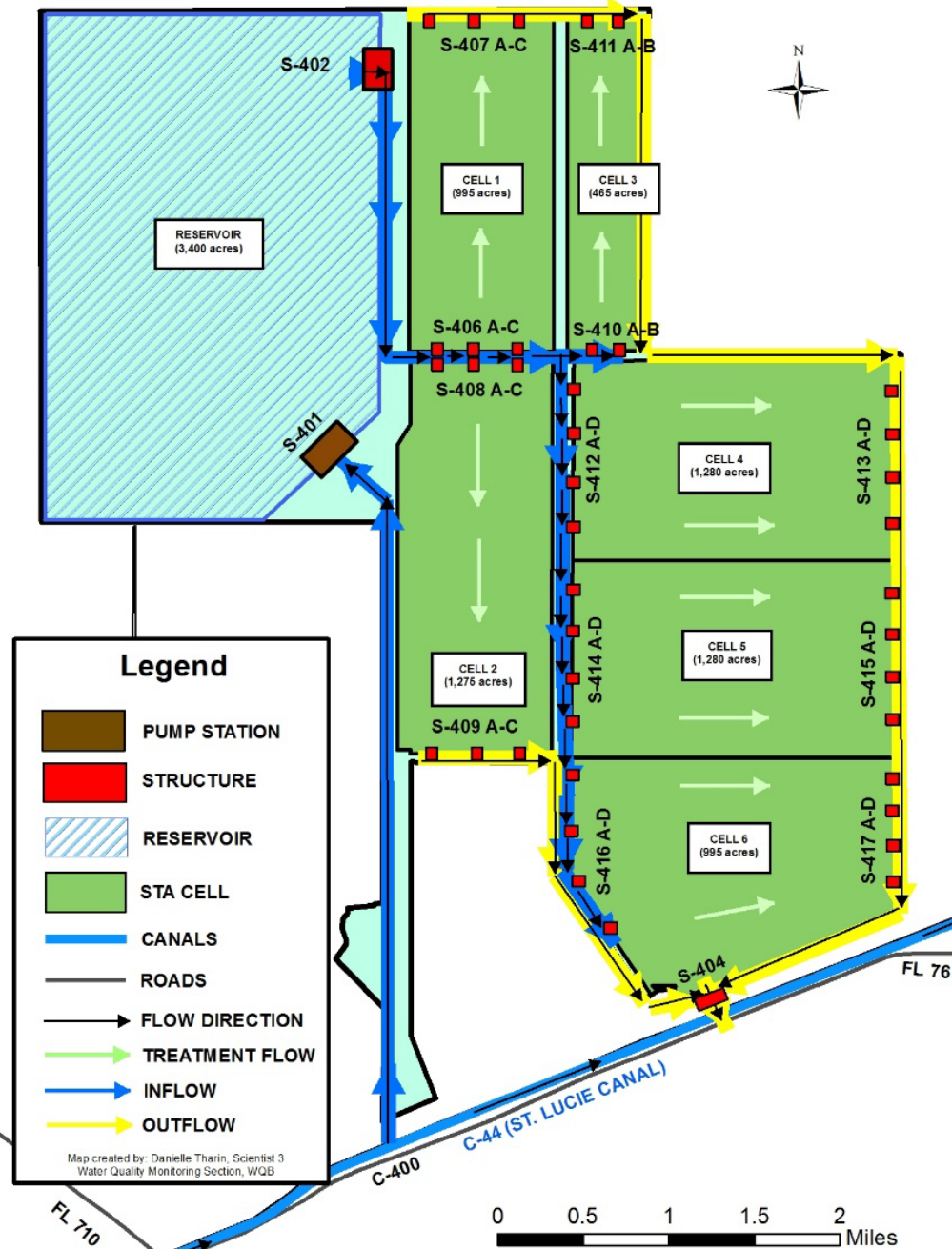
Design

- IRL-S C-23 to C-44 Interconnect
- IRL-S C-25 Reservoir and STA
- LOWRP ASR Wells and Treatment
- BBCW Phase 1 Cutler Flowway
- LRWRP Loxahatchee River Flow ways 2 & 3
- CEPP EAA Conveyance Improvements
- CEPP North: S-620
- CEPP New Water Seepage Cutoff Wall
- Bolles East Canal Conveyance Segment 5
- WERP L-28S Culverts & Conveyance
- C-111SD Replacement Pump Stations

Construction

- C-44 Reservoir & STA- OTMP
- C-43 Reservoir
- EAA A2 STA & I/O Canal
- STA-1W Expansion #2
- C-139 FEB
- STA-1W Refurbishments
- STA-2 Refurbishments
- 8.5 SMA Cutoff Wall

Indian River Lagoon-South C-44 Reservoir and STA



- Operational Testing & Monitoring Phase
 - STA complete – January 2021
 - Reservoir complete – September 2021
 - Start reservoir filling – January 2022
 - Operational Testing Start – May 2022
 - Reservoir turnover to SFWMD – November 2023

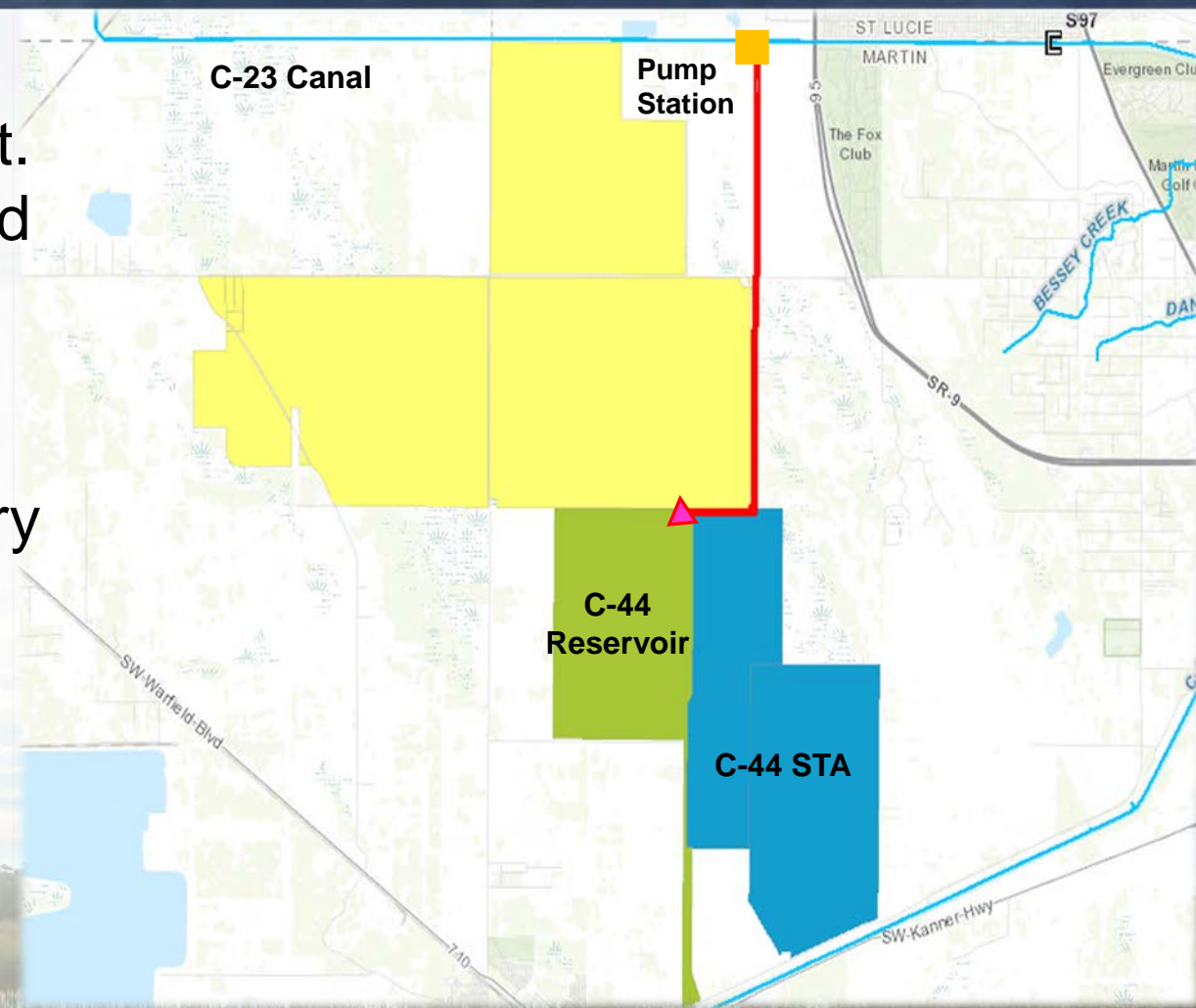


IRL-S C-23 to C-44 Interconnect

- Diverts harmful C-23 Canal discharges away from the middle St. Lucie Estuary to C-44 Reservoir and STA
- Brings flows to estuary closer to natural patterns
- Improves water quality in the estuary

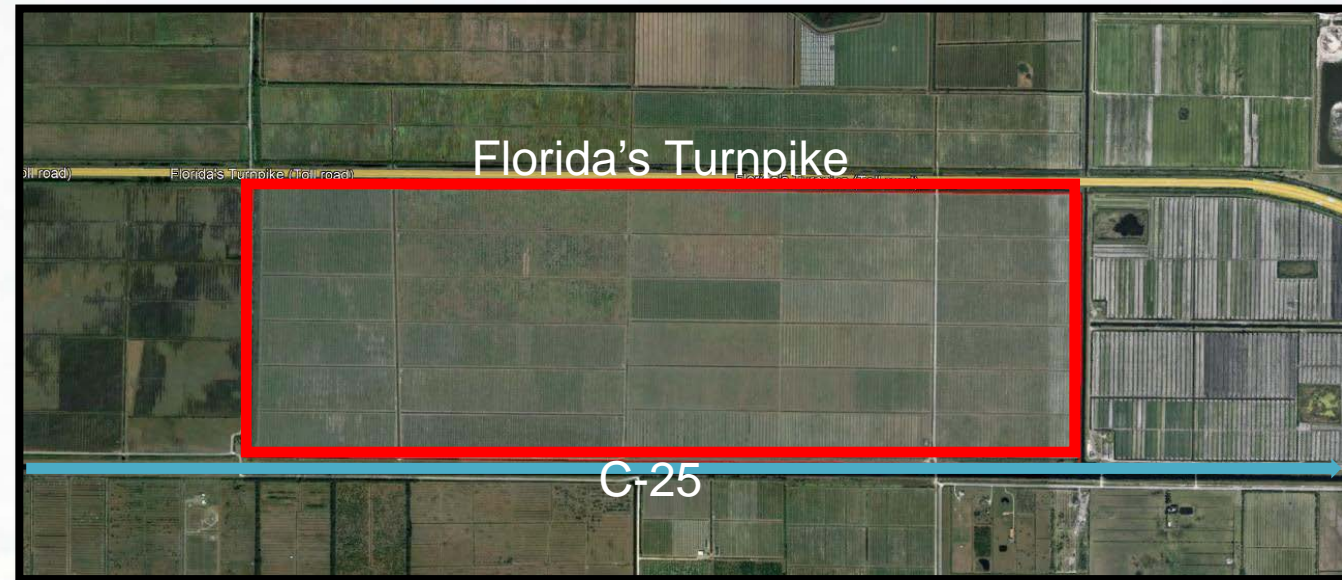
Current Status:

- Design complete
- Amendment to Project Partnership Agreement progressing
- Construction Contract Award – **October 2022**



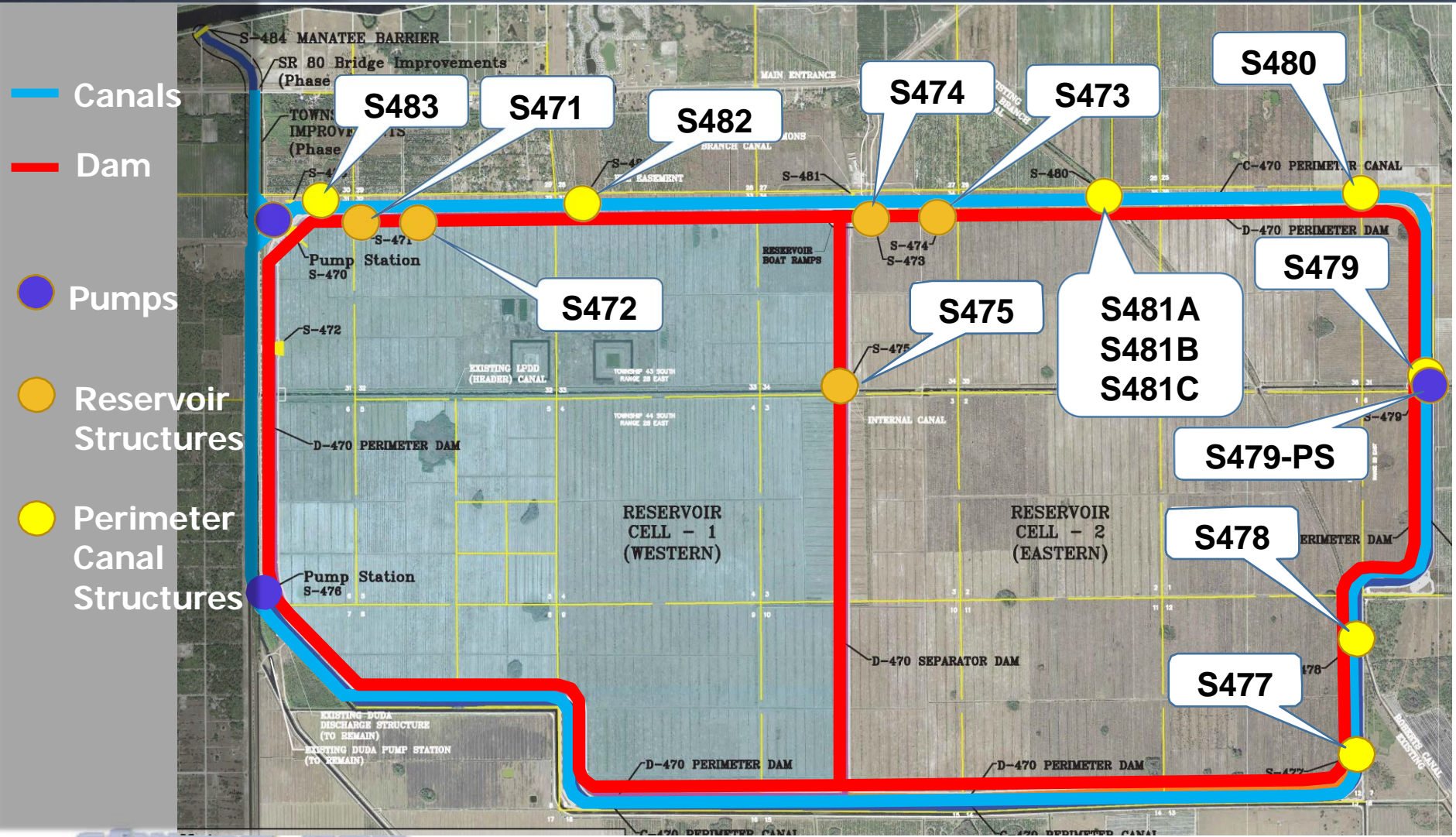
IRL-S C-25 Reservoir & STA

- Benefits:
 - 5,100 acre-feet of storage
 - Reduce nutrient loads to the Indian River Lagoon
- Real Estate Acquired- December 2021
- Current Status:
 - Design
 - Relocations
 - Amendment of Project Partnership Agreement - Pending WRDA 2022



Presenter: Mindy Parrott

C-43 West Basin Storage Reservoir



Features

- 2-Cell Reservoir
 - 10,500 Acres
 - 170,000 ac-ft of storage
 - Depth ranging from 15' – 25'

- 45% Complete
- Completion- September 2024

C-43 West Basin Storage Reservoir

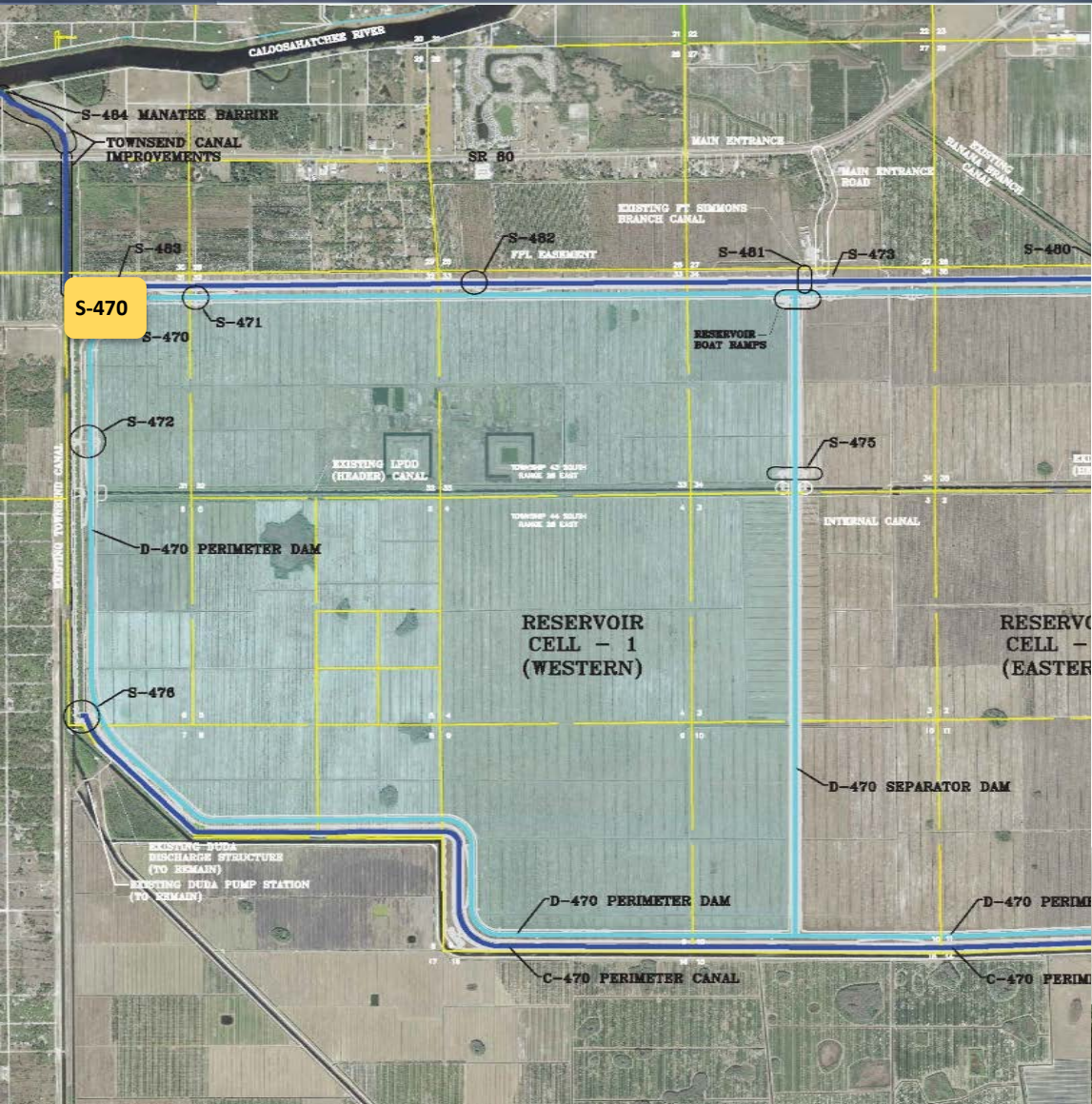


Dam embankment up to elevation 47 feet



S-477 Western Perimeter Canal Structure

C-43 West Basin Storage Reservoir - Inflow Pump Station



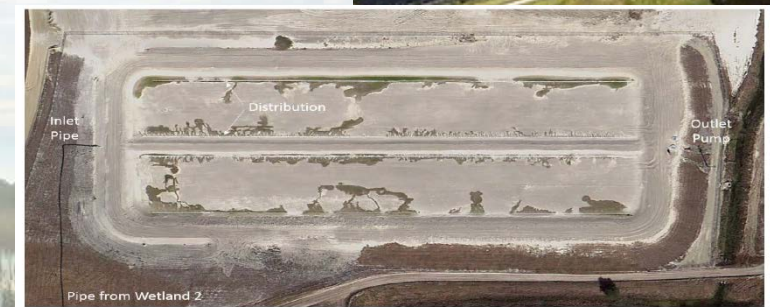
S-470 is Substantially Complete!



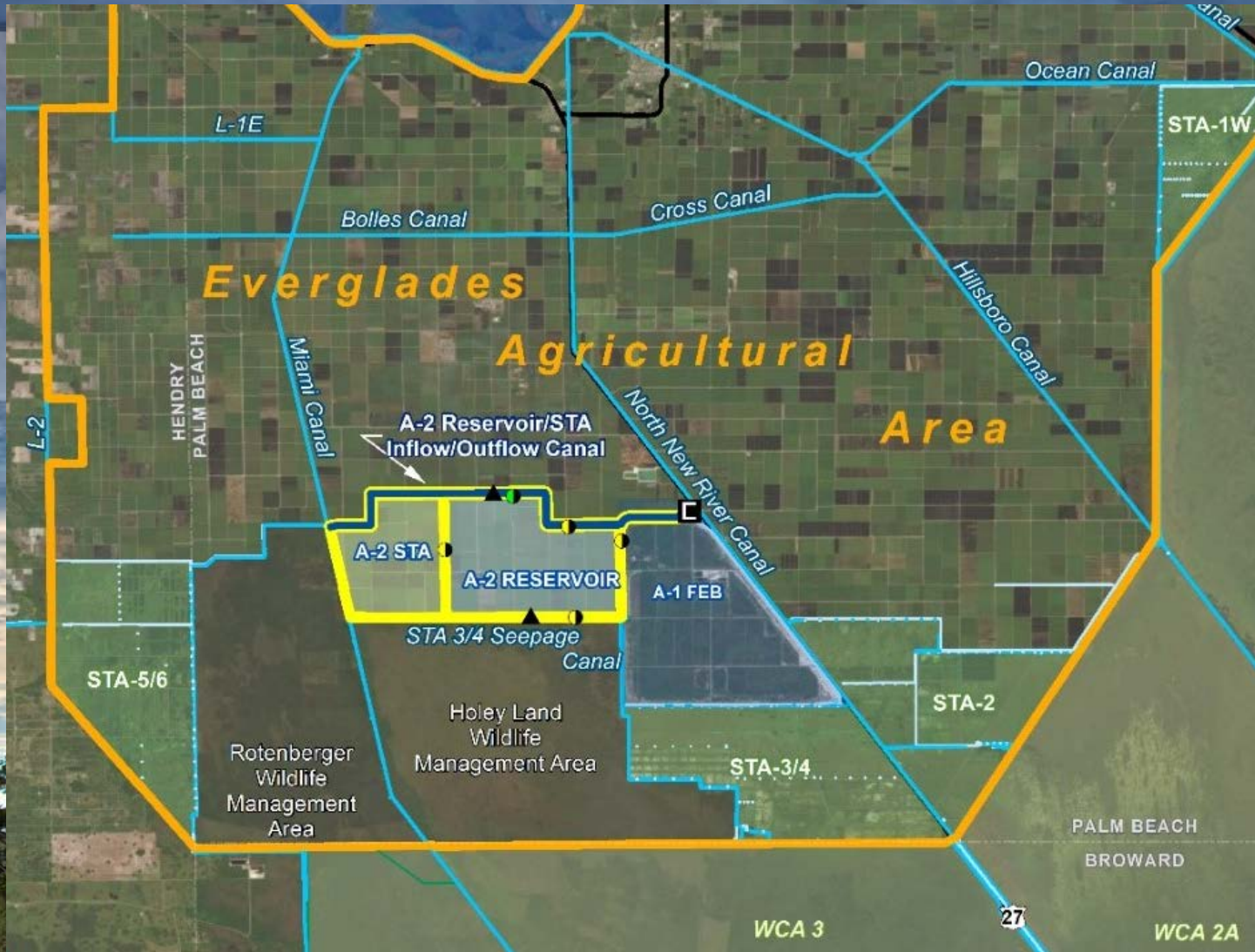
Caloosahatchee Reservoir Water Quality Component

Feasibility Study and Siting Evaluation December 2020:

- In-reservoir alum treatment was the most cost-effective and could be applied at reservoir inflow pump station
- **Design & Construction**
 - Design kicked-off April 2021
 - Anticipate USACE 408 authorization and Design Plans by the end of 2022
 - Procurement and installation in 2023
 - Obtain operations permit in 2024 concurrent with the C-43 reservoir operations permit
- **Northern Everglades & Estuaries Project-not CERP**



CEPP EAA: A-2 Reservoir & STA



- Construction Began April 2020
- Stormwater Treatment Area (STA) Inflow/Outflow Canal -80% Complete
- STA Construction
 - Completion December 2023
- Canal Conveyance Improvements
 - Design Advancing
- Reservoir (USACE Lead)
 - Design Advancing

CEPP EAA: A-2 Reservoir & STA



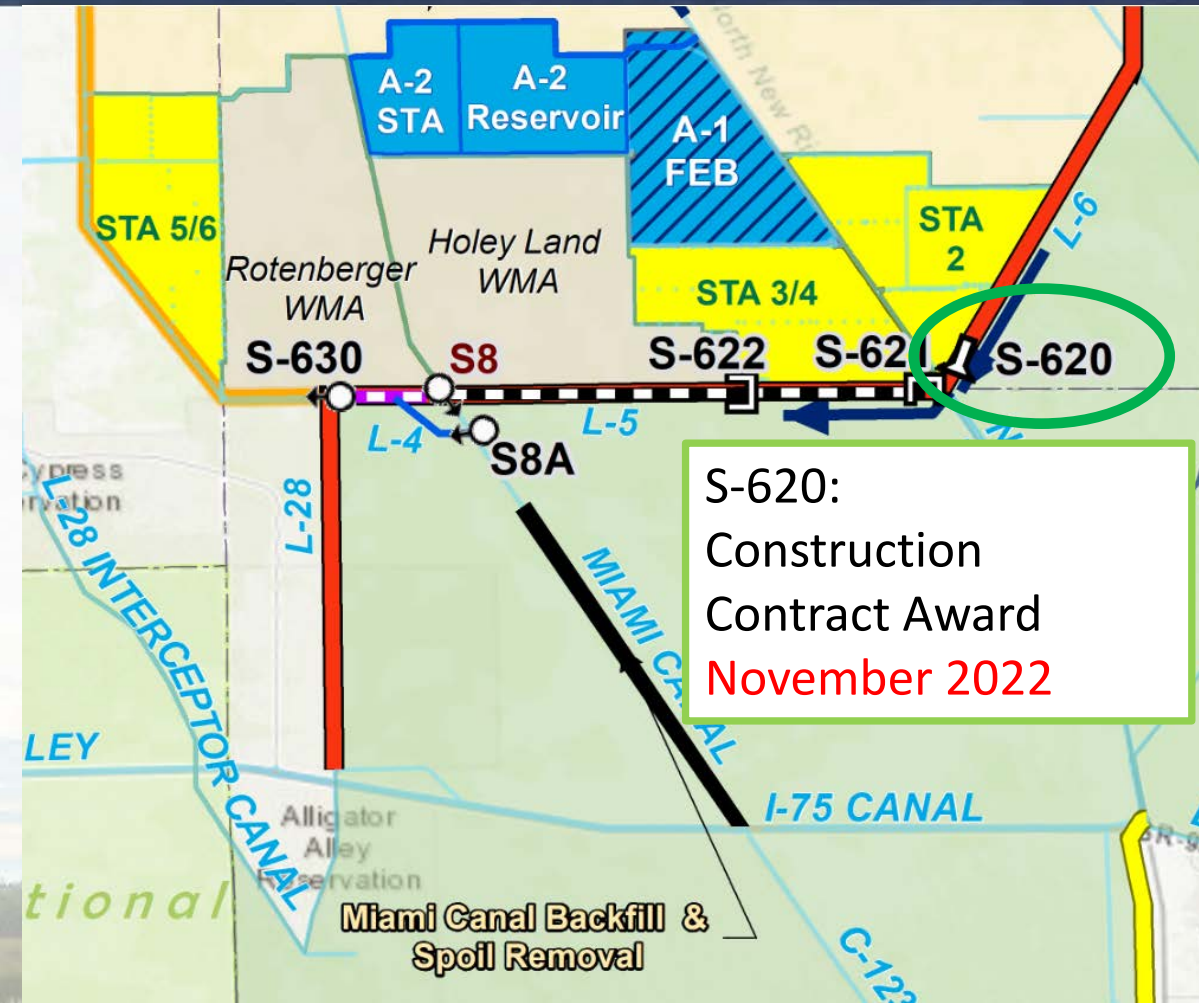
Inflow/Outflow Canal and Levee Construction



**S647 Spillway Structure &
S648 Seepage Pump Station**

CEPP North

- Improves distribution of water to WCA 3A
- Features:
 - **S-620 500 cfs gated culvert**
 - S-621 2500 cfs gated spillway
 - S-622 500 cfs gated spillway
 - S-8A gated culvert and canal
 - S-630 360 cfs pump station
 - L-4 Levee Removal
 - Miami Canal Backfill with Tree Island Mounds
 - L-5 Remnant Canal
 - L-5 Canal

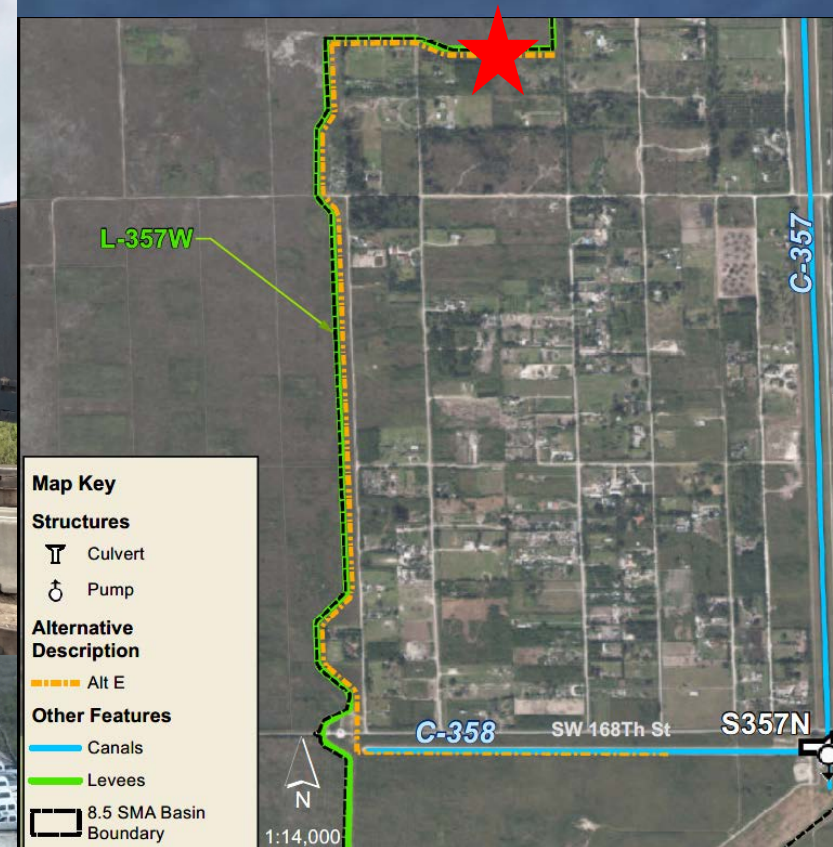


8.5 SMA Limited Curtain Wall

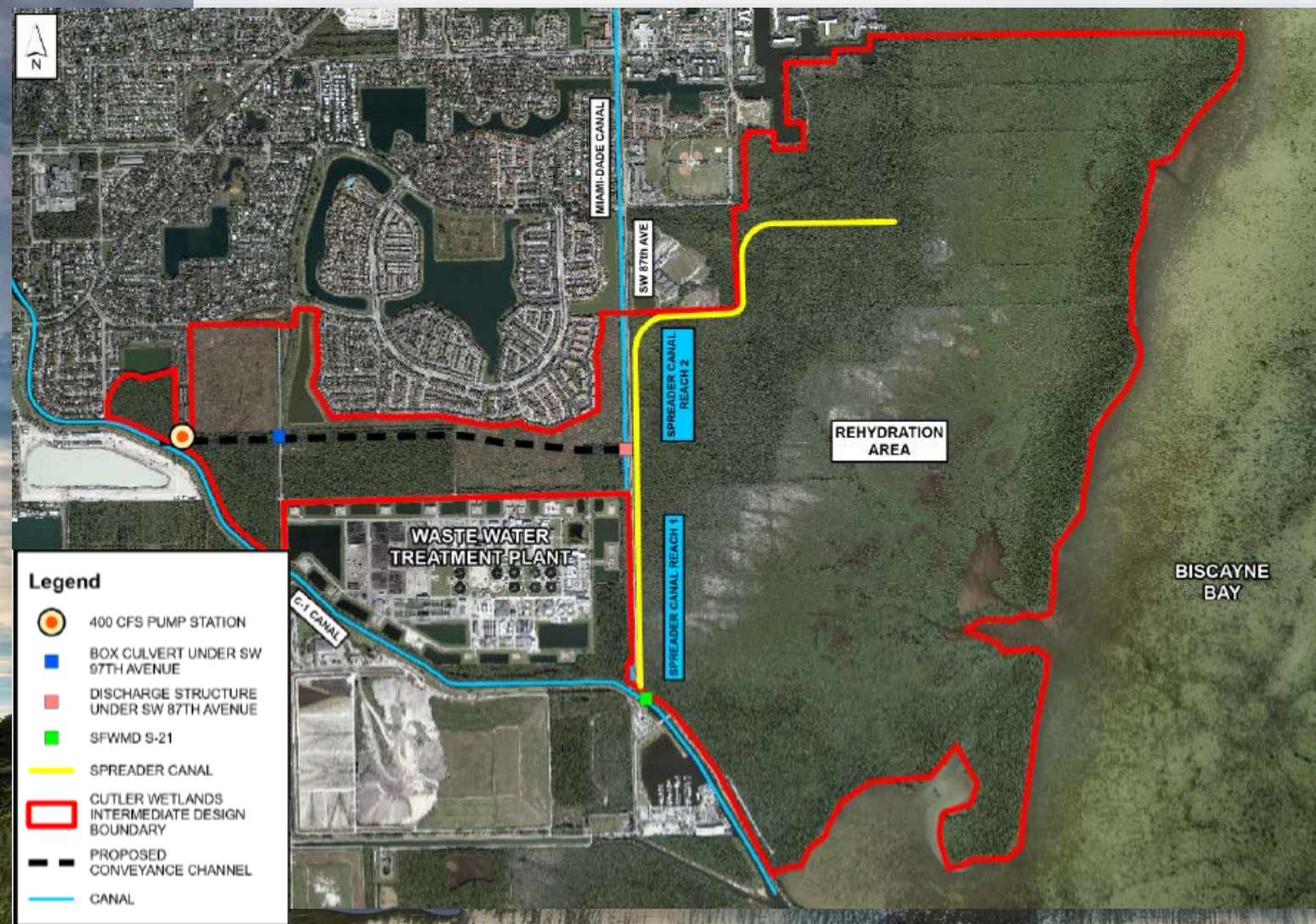
- Reduces seepage to 8.5 Square Mile Area (SMA)
- Allows for increased stages in Everglades National Park
- 2.3 miles
- Construction April 2021
- Complete **2022**

Next Phase- CEPP New Water Seepage Barrier

- 5 Miles
- August 2022- Governing Board approved contract award
- Working on PPCA



Biscayne Bay Coastal Wetlands Phase I Cutler Wetlands



- Contract 6A - **Award September 2022**
 - S-701: 400 CFS Pump Station

- Contract 6B - 2023
 - C-701: At-grade, concrete lined channel
 - S-701A: Culvert under SW 97th Ave
 - S-701B: Microtunnel under SW 87th Ave
 - C-702: Spreader canal
 - Berm breaches
 - Drainage ditch blocks
 - Recreation features

Loxahatchee River Watershed Restoration

- Pre-Project Credit Agreement executed July 2022
- Anticipating a Project Partnership Agreement in 2023
- Flow Way 3
 - Survey, Geotech, and Modeling
 - Engineering & Design starting with Gulfstream East and Kitching Creek
- Flow Way 2
 - Developing a Design Scope of Work
 - Architectural rendering

Flow Way 3

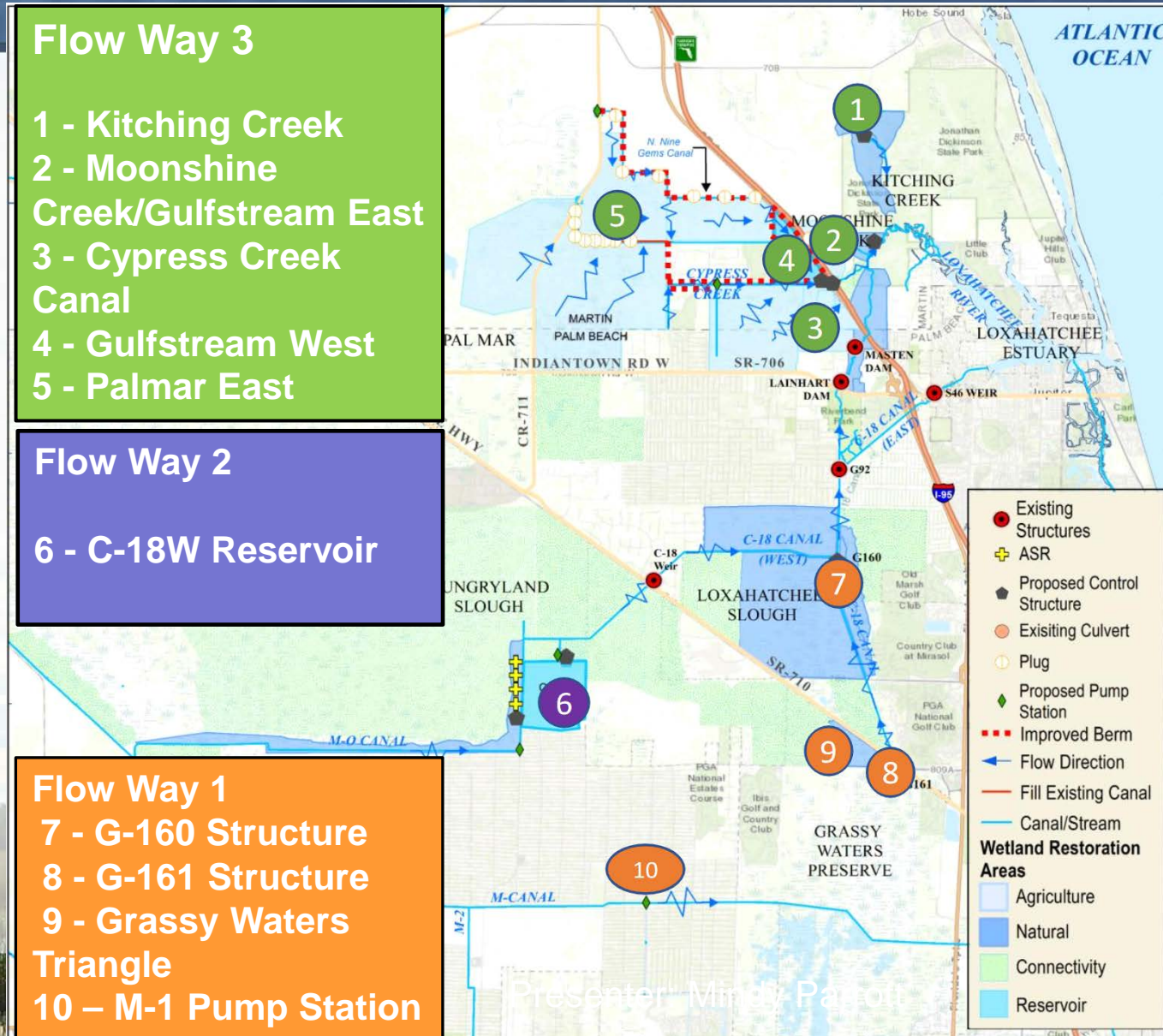
- 1 - Kitching Creek
- 2 - Moonshine Creek/Gulfstream East
- 3 - Cypress Creek Canal
- 4 - Gulfstream West
- 5 - Palmar East

Flow Way 2

- 6 - C-18W Reservoir

Flow Way 1

- 7 - G-160 Structure
- 8 - G-161 Structure
- 9 - Grassy Waters Triangle
- 10 - M-1 Pump Station



STA-1W Expansion No. 2

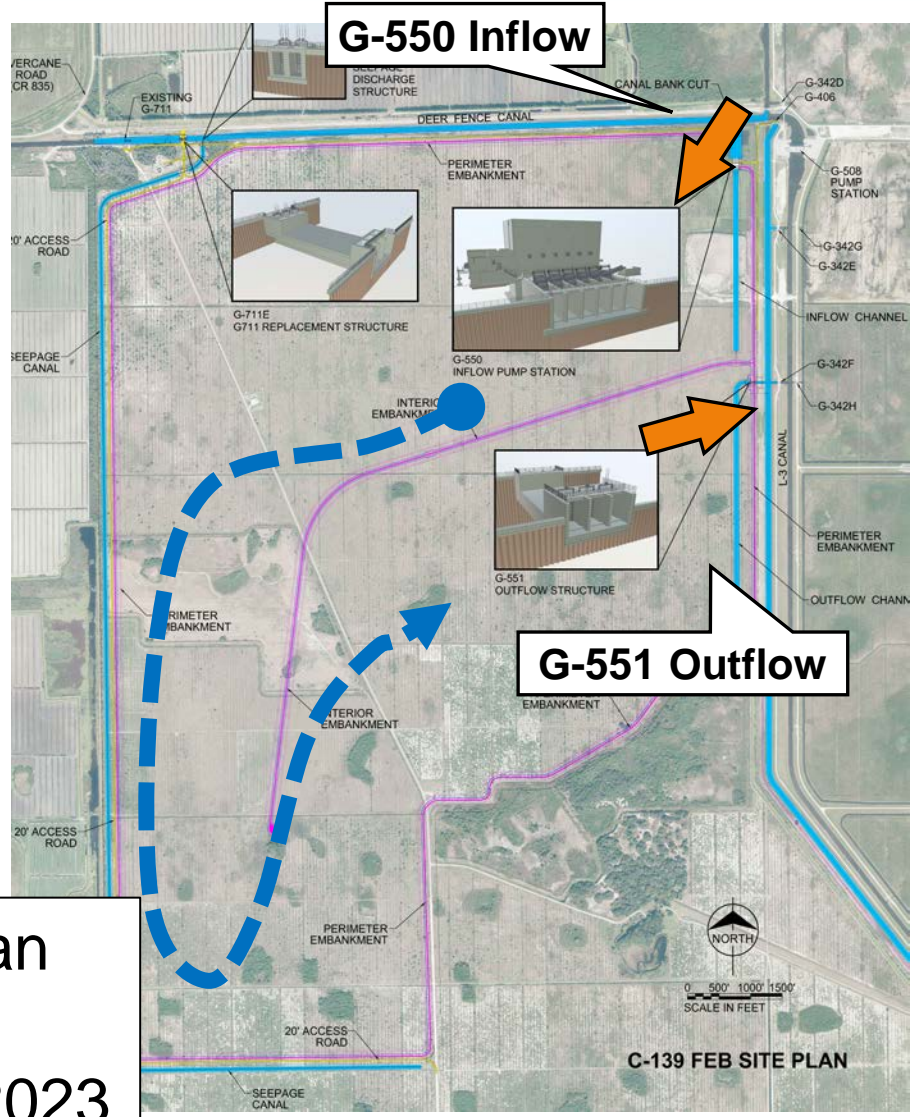
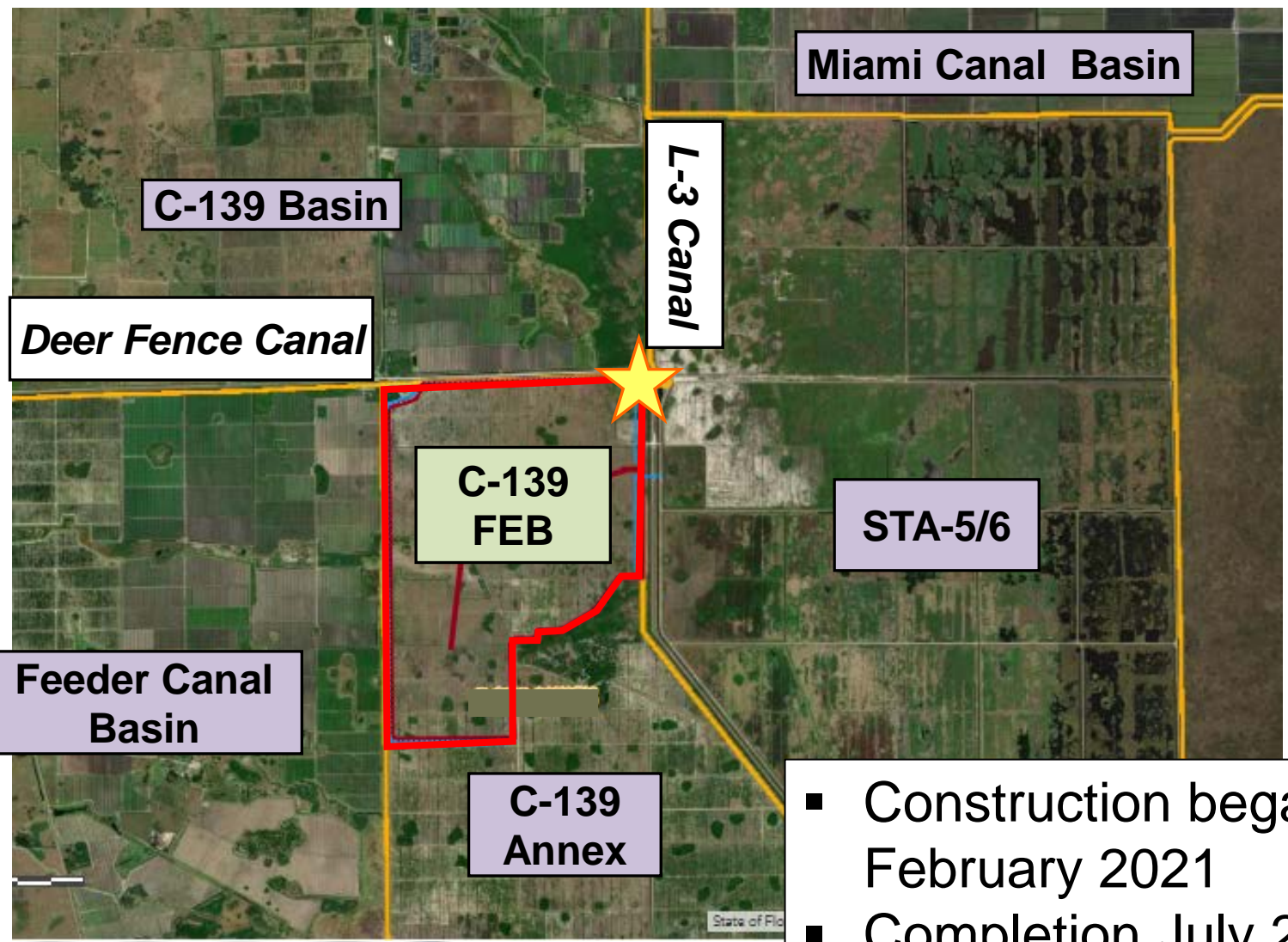


View to the North along the L-15 Canal



Looking West from WCA 1

C-139 Flow Equalization Basin



- Construction began February 2021
- Completion July 2023

C-139 Flow Equalization Basin



Questions?

mparrott@sfwmd.gov